

Grow with DIGA



Fall 2009

DIGA community gardens are growing across the city following a year of bumper harvests

The Disabled Independent Gardeners Association community gardens program is growing.

For two years now, the organization – which enables people with disabilities to grow a variety of plants – has been offering Vancouver wheelchair accessible community garden plots for those without access to land of their own.

This started with temporary use of development land at Pacific & Seymour, followed this year by George Pearson Centre plots on West 57th Ave.

Condos will be going up on the Pacific & Seymour site, but DIGA can announce new plots at Pandora Community Garden, East Vancouver (see Page 2) in addition to continued use of Pearson land.

“Three DIGA participants enjoy gardening at specially built ‘table-top’ plots at the Pearson Garden,” said DIGA program coordinator Betty Cheung. “Thanks to garden coordinator Jen Rashleigh, Sarah Wenman of CARMA and Christine Gordon of BCCPD who also organized a summer garden party for all gardeners and volunteers to meet and celebrate the success of the garden [photographed, right].”

Call Betty Cheung if you want to join us in the gardens next year, at 604-688-6464 ext. 106.



Seymour scene: Volunteer Eva Machalek (right) with member Terry Leblanc.



Pearson party: celebrating success.



Pearson success: Carrot harvest!

Yule love it: DIGA’s next workshop will enable participants to create a “Yule Log Festive Centerpiece.”

It will be held **2 – 3:30pm on Tuesday, Nov. 24** in the Activity Wing at George Pearson Centre (601 West 59th Ave., Vancouver – entrance near Stan Strong Swimming Pool). Participation costs \$10, which includes materials.

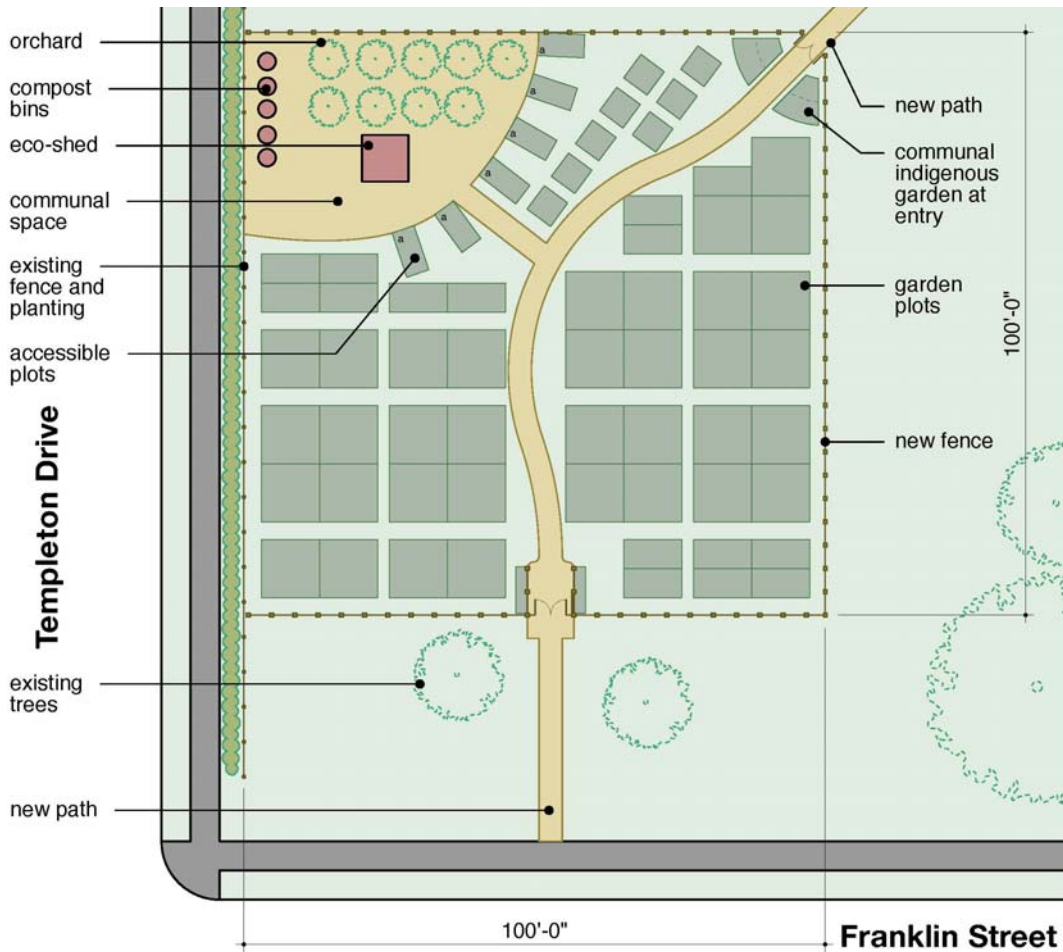
Horticultural consultant Amanda Jarrett will take members through the process of creating seasonal centerpieces with fresh greenery and decorations.

Thank you: Special thanks to the following DIGA volunteers:

Mary Jo Dawe, of New Westminister, for assisting DIGA member Mary Davis at her Burnaby senior’s home. Mary Jo helped the client, an experienced gardener, transform an overgrown garden into a flower bed and vegetable patch.

Eva Machalek, of Vancouver, for helping to maintain the Pacific & Seymour Community Garden, and offering to do the same at the Pandora Community Garden.

Thinking outside the box at Pandora Community Garden



Site map: Accessible plots at Vancouver's Pandora Park Community Garden.

Is lack of land holding back your growing ambitions?

DIGA is looking for participants to take part in a new wheelchair accessible garden, on Templeton Drive and Franklin Street, near Nanaimo & East Hastings.

Pandora Community Garden is offering three accessible plots for up to eight DIGA members. This is open to people with any level of experience, said DIGA program coordinator Betty Cheung.

“During growing season, we will have monthly get-togethers at the garden when participants and volunteers will work together. Extra help can be arranged when required.”

To reserve a place or ask questions call 604-688-6464 ext 106.

Workshop reviews: previous adaptive gardening get-togethers

The most recent workshops enabled members of Disabled Independent Gardeners Association to get to grips with a wide variety of plants.

Back in August, author Roy Jonsson, gave a lecture on starting plants in a small greenhouse at VanDusen Botanical Garden, which was followed by a guided tour.

DIGA was at the Rick Hansen Wheels in Motion event at the Hastings Park PNE site in June. Conway Lum lead a hands-on workshop to create planters with culinary herbs.

In May, members met at Queen's Park greenhouse, New Westminster, for a practical session to create a basket of summer annuals. Joan Miller led the session, and also presented a slideshow on the gardens.

At April's meeting, held at the Activity Wing in George Pearson Centre, Conway Lum took members through the steps required to create a vegetable planter. Members received pots, soil, and seedlings of tomato, lettuce and strawberry. In addition volunteers from the Tetra Society informed participants about adapted gardening tools.



August: VanDusen lecture, tour.



June: Herb planters at PNE.



May: New West Summer annuals.



April: Plotting planters.

More info: Betty Cheung

604-688-6464 ext. 106

bcheung@disabilityfoundation.org